



Product catalogue



Norwegian world class products



Rawness, ambition, strength and power

Contents

4	UH - 7028 FORAGE UNLOADER WAGON
5	UH - 8000 FORAGE UNLOADER WAGON
6	UH - 8001 FORAGE UNLOADER WAGON
7	UM - 7705 SILAGRIP
8	UM - 7806 SILAGRIP
9	UM - 7810 SILAGRIP
10	UM - 7762 KOMBIGRIP
11	UM - 7825 ROUND BALE HANDLER
12	UM - 7780 SILAGRIP
13	UM - 7800 SILAGRIP
14	UM - 7790 SILAGRIP
15	UM - 7790 XL SILAGRIP
16	UM - 7850 BALESTRIP
17	11500 ROUND BALE FORK
18	11400 DOUBLE ROUND BALE FORK
19	UH SILAGE FORK
20	UH MULTI FORK
22	UM - 8028, 8029 HAY BARROW
23	UM - 8003 CONCENTRATE TROLLEY
24	UM - 7900 DIRECT SEED DRILL
26	UM - 6030 / 6025 DIRECTS SEED DRILL
28	UM - 5150 2-ROW POTATO PLANTER
29	UM - 6150 ELEVATOR DIGGER
30	GLOBUS CROSSKILL ROLLER
31	GLOBUS CAMBRIDGE ROLLER
32	GLOBUS GRS 300
33	KOMBI SEED ROLLER
35	GLOBUS GSR STONE RAKE
36	SNOWBLOWER
37	GTF 235 & GTF 250
38	GSF 245-18 & GSF 255-18
40	GTF 255-18 & GTF 275-18
42	GLOBUS SELF-LOADING SPREADING BUCKET
44	EXCAVATOR BUCKETS
45	DIGGING BUCKETS, NARROW BUCKETS, CLEAN-UP BUCKETS, FIXED
46	CLEAN-UP BUCKETS, - HYDRAULIC TILT, RIDDLE BUCKETS, SORTING BUCKETS, TRAPEZOID BUCKETS
47	RIPPER, CUTTING EDGE

We rooth for all hardworking farmers

Farming never goes out of fashion! Neither does the need for high quality, innovative agricultural machinery. At Underhaug, we are ready to take on the world – and to do so, we need a network of dedicated, professional dealers. **Are you one of them?**

For more than 100 years, Underhaug As has produced quality equipment for agriculture and focused on simple tools that will last for generations. Underhaug produces well-known quality tools from Underhaug and Globus.

Underhaug is built on a strong working spirit and the experiences of several generations. We will always do everything in our power to serve our customers’ wishes.

We stand together for agriculture!



A robust forage unloading wagon with excellent weight distribution

Versatility: Transporting grass, unloading grass silage into silo or as a stationary silage cutter. Well proven by thousands of farmers.

The durability is impressive. If it can tackle tough Norwegian conditions with slopes and rough terrain it can be used anywhere! The wheel axle is mounted at the rear of the wagon, this means that up to 25% of the total weight is transferred to the tractor. UH 7028 comes as standard with adjustable track width. This ensures safety when driving on side slopes. The drawbar is also adjustable. Large wheels LP500x15.5" are standard. As an option bigger wheels than those ones standard mounted, to improve flotation and stability. Extensions to increase loading capacity as an option. This increases the load capacity by 30-50%. The discharge roller (option) spreads the grass into the silo. In many cases the discharge roller can replace the manual leveling in the silo. NEW: Declutching on the discharge roller. Thus, it's easy to switch between silo filling and feeding.

Underhaug Forage Unloading Wagon can be used together with a automatically controlled silage feeder. Options: Various wheel sizes, grass extensions, silage cutter and discharge roller etc.

	UH-7028
Total length	596 cm
Total height	237 cm
Flat bed length	370 cm
Flat bed width	170 cm
Frame height	138 cm
Payload	4000 kg
Unladen weight:	1300 kg
Track width	1,50-1,80

Wheel options:
500/50-17 Radial TL
600/50/22.5 159 D radial
650/40/22.5 150 D radial
710/35/22.5 157 D radial

Optional:
Sealing screen, Discharger roller, grass catcher, Light package.
Lime and fertilizer spreader. Gera motor (akW three-phase) for use as a stationary operation silage cutter. Lights: Bracket for lactic acid



Forage unloading wagon with high capacity

The scraper floor is hydraulically driven – a “must” for unloading into a tower silo.

The durability is impressive. If it can tackle tough Norwegian conditions with slopes and rough terrain it can be used anywhere! The wheel axle is mounted at the rear of the wagon, this means that up to 25% of the total weight is transferred to the tractor. UH 8000 comes as standard with adjustable track width. This ensures safety when driving on side slopes. The drawbar is also adjustable. Large wheels Lp600x15,5" are standard. As an option bigger wheels than those ones standard mounted, to improve flotation and stability. Extensions increases the load capacity by 30-50%. The discharge roller (option) spreads the grass into the silo. In many cases the discharge roller can replace the manual leveling in the silo. NEW: Declutching on the discharge roller. Thus, it's easy to switch between silo filling and feeding.





	UH-8001
Total length	684/706 cm
Total height	256/347 cm
Flat bed length	408 cm
Flat bed width	215 cm
Frame height	
Payloadt	
Unladen weight:	2200 kg
Track width	
Wheel options	
600/50/22.5 159 D radial	
710/35/22.5 157 D radial	
(Optional)	
Side walls extensions	
Grass catcher	
Discharge roller	
Light package	
Sealing screen	

Forage Unloader Wagon with hydraulic rear gate. The perfect implement for filling silos.

High capacity Forage Unloader Wagon, low unladen weight, low ground pressure. Hydraulically driven scraper belt – Perfect for silage pit.

The durability is impressive. If it can tackle tough Norwegian conditions with slopes and rough terrain it can be used anywhere! The wheel axle is mounted at the rear of the wagon, this means that up to 25% of the total weight is transferred to the tractor. UH 8001 comes as standard with adjustable track width. This ensures safety when driving on side slopes. The drawbar is also adjustable. Large wheels LP600x15,5" are standard. As an option bigger wheels than those

ones standard mounted, to improve flotation and stability. The discharge roller (option) spreads the gras into the silo. This increases the load capacity by 30-50%. The patented discharge roller (option) is a good investment. It spreads the gras gentle and accurate in the silo. In many cases the discharge roller can replace the manual leveling in the silo. NEW: Declutching on the discharge roller. Thus, it's easy



Round bale handler with roller tines

for gentle handling of wrapped round bales

With Silagrip I (UM-7705) bales can be transported and stacked without damaging the stretch film. The roller tine system consists of 1 pair rollers, bearings and Kverneland standard bale spears. The roller arms handle the bales very gently.

It's easy to convert UM - 7705 Silagrip Grapple into an ordinary bale fork, just pull the rollers off from the spears. This is done in a few minutes. An upper bale spear can be supplied as an option. The upper bale spear is needed to rotate bales. It also provides a secure transportation. Silagrip I requires one double-acting hydraulic outlet. Supplied with 1.5 m hydraulic hoses and ISO couplings. Regarding couplers (for weld-on, directly or on plates) for front loader, contact the front loader dealer. 3-Point point mounting Category II.

Weight	175 kg
Length	1500 mm
Height	700 mm
Claw length	1100 mm
Grapple width	1800 mm
Max. bale diameter	1400 mm

Order number	
UM 7706	Trima/Alo/HMV-brackets
UM 7707	Triangle bracket
UM 7708	Euro brackets
UM 7709	Combi brackets HMV/Trima/SMS/ Accord bracket/3-point
UM 7710	Overhead arm
UM 7711	Top link bracket for Overhead arm
UM 7712	round bale fork (2 pcs.)
UM 7714	3-point for lower link and top link
UM 7715	Three-point kit (7705 + 7710)



Double Hydraulic bale handler with roller tines

For gentle transport and handling of wrapped 2 round bales.
Delivered with 2 double-acting cylinders and 4 hydraulic hoses.

Weight	350 kg
Length	1330 mm
Height	700 mm
Claw length	1180 mm
Grapple width	2330 mm
Max. bale diameter	1200 mm
Maximum Bale Weight	900 kg x 2
Order number	
UM 7812	Trima/Ålo/HMV-bracket
UM 7813	Accord bracket
UM 7814	Euro brackets
UM 7815	Combi brackets HMV / Trima / SMS / Accord bracket / 3-point
UM 7710	Overhead arm for 7805 and 7806



Triple Hydraulic bale handler with roller tines

for gentle transport and handling of wrapped 1 - 3 round bales

To achieve high quality round bales, a good result depends on more than the baling and wrapping. It is also important to avoid damaging the stretch film when handling and transporting the bales. Sizes available Underhaug has a wide range of round bale grapples / lifters. Choose between 1, 1+1, 1+2, 1+3, 2+2, 2+3, 3+3, depending on the tractor size. With just one tractor you can transport up to 6 round bales. You'll get a high, gentle transport efficiency. Silagrip 7 requires one double-acting hydraulic outlet. Supplied with 1.5 m hydraulic hoses and ISO couplings. Available with most types of tool carriers for front loaders.

Operation

Step one: Pick up bale number 1 with the front or rear mounted bale grapple. Step two: Pick up bale number 2, drive next to number 3 and unload the rear bale. Step three: Back and lift all 3 bales with the rear mounted UM- 7810 Triple Round Bale Grapple. Step four: Pick up 1, 2, or 3 bales with the front mounted bale grapple, depending on the type of bale grapple (single, double or triple). A support bar on top of the frame prevents the ball from sliding into the tractor. With UM-7810 Silagrip 7 Triple Round Bale Grapple bales can be transported and stacked without damaging the stretch film. The roller tine system consists of 2 pair of rollers, bearings and Kverneland standard bale spears. The roller arms handle the bales very gently. It's easy to convert the bale grapple into an ordinary bale fork, just pull the rollers off the the spears. This is done in a few minutes.

Weight	260 kg
Length	1330 mm
Height w / support	1320 mm
Claw length	1180 mm
Grapple width	2330 mm
Max. bale diameter	1200 mm
Max. bale Weight	900 kg x 3
Order number	
UM 7716	Combi brackets HMV/Trima/Triangle/3.-point
UM 7750	welded Trima/Ålo/HMV brackets, painted
UM 7751	welded Triangle, painted
UM 7752	welded Eurocoupling, painted



Combigrip

Combigrip for handling and stacking all types of round bales

UM-7762 Combigrip is specially developed for stacking bales without damaging the stretch film. The Combigrip handles round bales from any angle and can also be used on square bales.

There are no rollers or arms that get pinched either below or on the sides of stacked bales: The grapple lifts the round bale from above. UM-7762 Combigrip is perfect for stacking as well as for picking bales from the stack. The gripper requires a double-acting hydraulic outlet and is supplied with 1.5 meter hydraulic hoses and ISO couplings.

Weight	160 kg
Length	1500-2100 mm
Height	1240 mm
Max width (mm)	1240 mm

Order number	
UM 7762	
UM 7763	with 3-point linkage
UM 7764	with Trima / Alo / HMV brackets
UM 7765	with Accord brackets
UM 7766	with Euro brackets



Round bale handler

Round bale handler with grip arms for transporting and stacking of round bales on the side or end

Round bale handler with freely oscillating, curved and rounded handler arms for gentle handling of round bales. With this model, it is possible to choose whether you want to stack the round bales on the end, side or height. The design of the handler arms means that ready-wrapped round bales are transported / stacked without damaging the plastic. UM-7825 can handle round bales from 900 - 1800mm in diameter. The UM-7825 is also equipped with an anti-sigging valve. This provides safer transport over longer distances. We supply UM-7825 for most front loaders. A double-acting hydraulic outlet on the tractor is required. The lifting capacity is 1200kg. Supplied with 1 meter hydraulic hoses and ISO couplings.

Weight	190 kg
Length	1230 mm
Height	810 mm
Width (folded)	1350 mm
Grapple width	1975 mm

Order number	
UM 7825	
UM 7826	with Trima / Alo / HMV-bracket
UM 7827	with Accord bracket
UM 7828	with Euro brackets



Easy handling of round bales

A standard bale gripper (Silagrip 1 or Silagrip 2) mounted at the front loader and a Silagrip 4 round bale lifter at the rear affords double capacity.

A cost-effective implement for lifting and transporting round bales. UM-7780 has two A cost e semi-vertical arms with an outer and inner limiter. When the bale lifter is lowered to the ground to pick up the bales, the semi-vertical arms with lifting tubes spread automatically to the outer limiter. When lifting the implement, the semi-vertical arms with lifting tubes swing together and hold the bale.

UM-7780 Bale lifter is made for or mounting onto the tractor's three-point linkage. It also possible to weld on a A-frame. Can also be adapted to front loaders.

Weight	70 kg
Max bale diameter	1200 mm
Maxs. bale weight	900 kg

Order number	
UM 7781	with Trima / Alo / HMV brackets
UM 7782	with Accord bracket
UM 7783	with Euro brackets



Gentle transportation of 3 round bales

Today's tractors are getting more and more powerful. We have therefore launched "Triple" round bale lifter and round bale grapple. Combined with our already existing single and double round bale grippers and lifters, our concept "Silagrip" provides full coverage for transporting 1-6 bales simultaneously.

The combination of Silagrip 1, Silagrip 2 or Tripple Silagrip 7 at the front loader and a Triple Silagrip 6 at the three-point linkage gives up to five times capacity when bales are to be transported.

UM-7800 Silagrip 6 Triple Round Bale Lifter

A cost-effective mechanical implement for lifting and gentle transporting 1- 3 round bales. The lifter has two sets of lifting tubes welded on separate semi-vertical arms with an outer and inner limiter. When the bale lifter is lowered to the ground to pick up the bales, the semi-vertical arms with lifting tubes spread automatically to the outer limiter. When lifting the implement the semi-vertical arms with lifting tubes swing together and hold the bales. When lifting the implement the semi-vertical arms with lifting tubes swing together and hold the bales.

Weight	200 kg
Length	1330 mm
Height w / support	1400 mm
Claw length	1180 mm
Grapple width	2200 mm
Max. bale diameter	1400 mm
Max. bale Weight	900 kg x 3

Order number	
UM 7801	with Trima / Alo / HMV brackets
UM 7802	Accord bracket
UM 7803	Euro brackets
UM 7804	Combi bracket HMV/Trima/SMS/ Accord bracket, Quick bracket/3-point



Rational and gentle transportation of 2 round bales

UM-7790 Double Round Bale Lifter is quick and easy to operate. For mounting in the tractor's three-point linkage. It's also possible to have a double round bale lifter at the rear and a UM-7780 at the front for transporting 3 bales at the same time. With wrapped round bales and relatively short transport distances, the double round bale lifter is the perfect solution.

The working principle is similar to the single bale lifter UM-7780. UM-7780 has two lifting tubes welded on separate wsemivertical arms with an outer and inner limiter. When the bale lifter is lowered to the ground the semi-vertical arms with lifting tubes spread automatically to the outer limiter. Then pick up the bale. When lifting, the semi-vertical arms with lifting tubes swing together and hold the bale. The double round bale lifter is actually a UM-7780 with a wider frame and has two pairs of semi-vertical arms with lifting tubes instead of one pair. In other words, a twin of the single Bale lifter.

How to use:

Pick up one bale and unload it close to (10 to 20 cm) another bale. Pick up both bales. To avoid damaging the stretch film you must be careful when handling the bales. This way you avoid damaging the film. To pick up the first bale it does not matter if it is picked up on the right or left side of the bale lifter, simply drive to the second ball so that it can be laid 10-20 cm from it.

Weight	150 kg
Max. bale diameter	1200 mm
Max round bale weight	900 kg x 2

Order number	
UM 7891	with Trima / Alo / HMV brackets
UM 7892	Accord bracket
UM 7893	Euro bracket
UM 7894	Combi bracket HMV/Trima/SMS/ Accord bracket/3-point



Effective and gentle transportation of round bales from 120 and up to 150 cm

UM-7790 XL Double Round Bale Lifter is easy to operate. It is made for or mounting in tractor's threepoint linkage with ball ends or Walterscheid Quick Coupler. It's also possible to have a double round bale lifter at the rear and a UM-7780 at the front for transporting 3 bales at the same time. With wrapped round bales and relatively short transport distances, the double round bale lifter is the perfect solution.

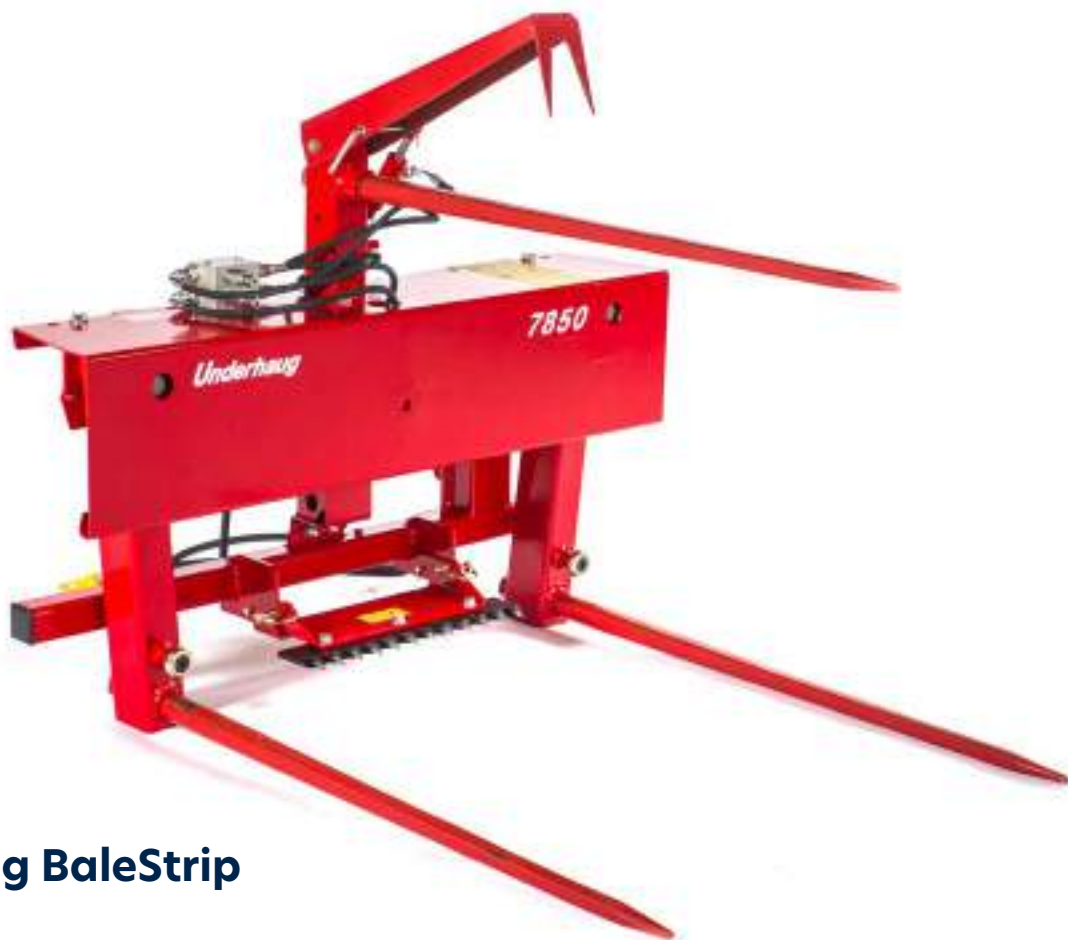
The working principle is similar to the single bale lifter UM-7780. UM-7780 has two lifting tubes welded on separate semi-vertical arms with an outer and inner limiter. When the bale lifter is lowered to the ground the semi-vertical arms with lifting tubes spread automatically to the outer limiter. Then pick up the bale. Effective and gentle transportation of round bales from 120 and up to 150 cm When lifting, the semi-vertical arms with lifting tubes swing together and hold the bale.

The double round bale lifter is actually a UM-7780 with a wider frame and has two pairs of semi-vertical arms with lifting tubes instead of one pair. In other words, a twin of the simple Bale lifter. How to use: Pick up one bale and unload it close to (10 to 20 cm) another bale. Pick up both bales. To avoid damaging the stretch film you have to be careful when handling the bales. This way you avoid damaging the film.

To pick up the first bale it does not matter if it is picked up on the right or left side of the bale lifter, simply drive to the second ball so that it can be laid 10-20 cm from it.

Weight	185 kg
Max. bale diameter	1500 mm
Maxi. Bale weight	900 kg x 2

Order number	
UM 7795	with Trima / Alo / HMV brackets
UM 7796	Accord bracket
UM 7797	Euro brackets
UM 7798	Combi brackets, HMV / Trima/SMS/ Accord brackets, Quick brackets / 3-point



Underhaug BaleStrip

Easy removal of plastic and net - can also be used as a regular round bale gripper

Weight	210 kg
Length	1500 mm
Height	700 mm
Claw length	1200 mm
Max. bale diameter	1400 mm
Order number	
UM 7852	Stationary Counter) knife
UM 7853	Knife for mounting on forage mixer wagon

The Silastrip has as standard 3 tines. One upper and two lower. In addition, it is equipped with a hydraulic claw. The claw is normally open in the upper position. The claw is hydraulically operated.

Operation

Set the lower tines in their innermost position. Insert the upper tine as high as possible in the bale. Use the stationary knife to split the plastic at the bottom of the bale. Position the bale over the feeding location. Lower the claw towards the upper tine and squeeze plastic and net. By spreading the lower tines, the bale will open; the silage will fall out, and the plastic will remain squeezed between the upper tine and the claw. The Silastrip can also be used as a standard hydraulic round bale gripper with roller arms.

Conversion to round bale gripper is done in a few minutes by inserting rollers (tubes) on the 2 lower tines and securing with a screw. The horizontal knife between the tines must be tilted up and locked. Take off the upper tine and tilt up the claw to a vertical position and activate the lock. The Silastrip can now be used for lifting and transporting round bales.



Round bale fork

Underhaug 11500 round bale fork

Round bale fork with 3 tines that can be tilted up hydraulically for safe transport. When driving along the road, the spear can easily be tilted up into the transport position when it is not in use. The bale fork is solid and has 3 tines, one short (985mm) and two long (1240mm) which provide a good grip for the round ball. The 11500 also has a low weight and has the center of gravity close to the tractor. We supply 11,500 to most front loaders. A double-acting hydraulic outlet on the tractor is required. Supplied with 1 meter hydraulic hoses and ISO couplings.

Weight	90 kg
Length w/tines	1225 mm
Height	615 mm
Width	814 mm
Order number	
11500	
11501	with Trima / Alo / HMMV brackets
11502	with Accord bracket
11503	with Euro brackets
11504	with 3-point brackets



Weight	160 kg
Max. bale weight	1100 kg x 2
Total width	2540 mm
Order number	
11400	Double bale fork standard with 3-point coupler
11401	(double bale fork with Trima/Alo/HMV-bracket
11402	Double bale fork with triangle Quick bracket
11403	Double bale fork with Euro brackets
11404	Double bale fork with Combi-brackets HMV /Trima / Alo / Accord bracket

Underhaug double bale fork

The Bale Fork is designed to transport 2 round bales up to 1800 mm diameter

The outer dimensions of the frame are 2540 mm; in compliance with the traffic regulations in force which requires a max. speed of 30 km / h and Total width max 2550m (country specific). The frame is equipped with a standard 3-point connection and 6 pcs. Kverneland tines mounted in welded sleeves. The tines can be removed individually. The tines are positioned to fit 2 x 1200 mm round bales for safe and secure transportation.

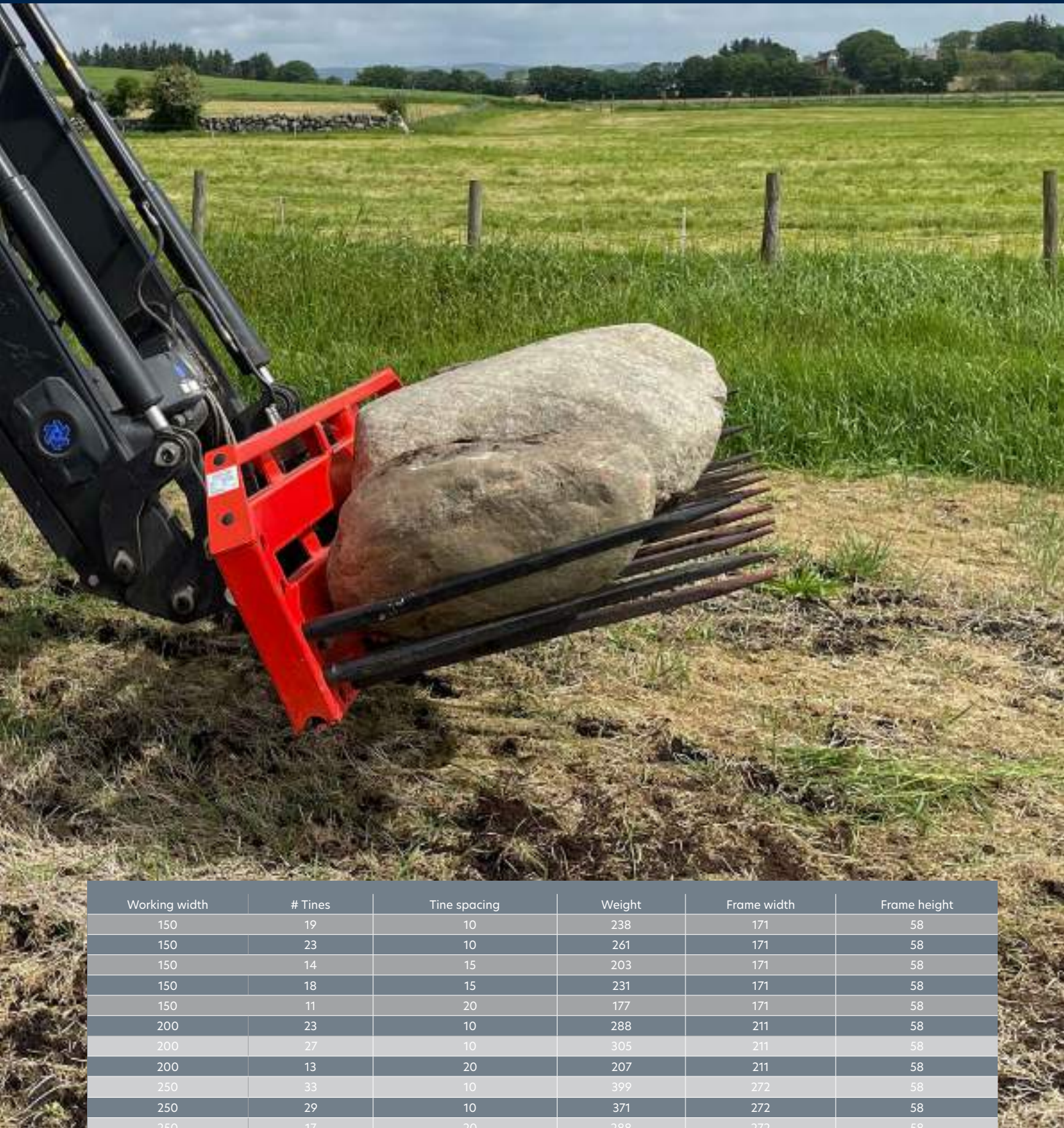
The fork is so solid that even with heavy bales 2 tines in each bale ensures safe transportation. The bales are supported by the upper tines (if installed) If you take off the upper tines the bale fork can also work well as a double pallet fork.



Underhaug silage fork
with high quality and capacity



Work width	# tines	Tine spacing
300	13	30
Order number: KMG135XS		



Underhaug MULTISVANS
(Multi-fork)

The Underhaug Multisvans is a multi-fork implement for front or rear mounting –suitable for all transportation tasks. It is easy to adapt to all types of front loaders / tool carriers. Can also be delivered with standard 3-point connection.

A unique tool

The Underhaug Multisvans is a unique multi-tool for handling stone and many other loading and transportation tasks such as: silage, dry manure, firewood, straw and hay bales, pallets etc. This is a real multi-fork implement! Robust frame design The frame is made of solid square tubes. The entire structure is reinforced with Kverneland's unique steel heat treatment method. This applies also to the tines.

Efficient

Underhaug's Multisvans with a hydraulic top linkage is an efficient multi-fork for breaking and transporting stones and roots. Mounted on a front loader it is a useful implement for handling silage, dry manure, stones etc. The four side tines provides safe handling and transportation with a full load. By dismantling some tines, Multisvans can also be used as a pallet fork.

Different widths, tine spacing and tine types

Underhaug Multisvans can be delivered in widths of 1.5 m, 2 m, 2.5 m and 3 m. Available with tine spacings 10 cm, 15 cm, 20 cm or 30 cm, with straight or curved tines. The cranked tines are especially suitable for various loading tasks and for gathering stones on top of loose soil. It's not necessary to lower the frame completely down to the ground. The result is better separation and less wear. The result is better separation and less wear on the cross beam.

Various couplers

As standard Multisvans is delivered without connection brackets/ couplers. Choose between: Trima, Ålø, Bergsjø, Ålø type III, Large Volvo, Small Volvo and Stoll. In addition we can deliver tilt-frame (mechanical) for three-point linkage.

Working width	# Tines	Tine spacing	Weight	Frame width	Frame height
150	19	10	238	171	58
150	23	10	261	171	58
150	14	15	203	171	58
150	18	15	231	171	58
150	11	20	177	171	58
200	23	10	288	211	58
200	27	10	305	211	58
200	13	20	207	211	58
250	33	10	399	272	58
250	29	10	371	272	58
250	17	20	288	272	58
300	37	10	449	312	58
300	19	20	324	312	58

Length: curved= 960mm (241181), straight= 980 mm (241161), straight=1240 mm (241162)

Order number	
UM 7716	Combi brackets HMV/Trima/Triangle
UM 7750	welded Trima / Alo / HMV brackets, painted
UM 7751	welded Triangle, painted
UM 7752	welded Euro brackets, painted
241454	3-point w / tip Multisvans
241455	3-point Multisvans
360130	SMS / Trima / HMV Bale Fork (w / 2 pcs. M24x120)



Concentrate Trolley
with wheels - for fast and precise feeding.

50 YEARS OF QUALITY

Hay barrow for transport and distribution of hay and silage

It is primarily intended for the transportation and distribution of silage grass, wet grass, lye straw and other green fodder inside the barn. Simplifies manual handling. Work studies show that you can do far more with this tool than with a hay fork.

Other transport equipment

The Hay barrow is also a handy little cart that can be used for other various light transports on the farm. A sack of turnips, a couple of small square straw or hay bales to be moved a short distance etc. It's a handy tool!

Light and robust.

It is designed as a hay fork for tractors, with 5 steel tines that carry the load and an overhead double claw. The load is released by pressing a pedal. It rolls easily on large rubber wheels and handles loads of 75-100 kg.

8029 Hay barrow
for finecut silage
with 7 tines



Application

The metering system is simple- precise and safe. The discharge rate is adjusted with a screw at the bottom of the trolley.

The discharge rate is indicated on a scale

The well-laid out and easy-to-read scale shows concentrate amount from 0-10 kg. The scale can be set steplessly (calibrated) in relation to the speed of the discharge screw. The scale therefore displays the discharge rate accurately (kg) regardless of the type of concentrate used.

Flexible

The discharge spout can be adjusted to suit different heights of trough. The track is adjustable.

Brake disc 241295

The brake disc is designed to reduce spills of pellets at the discharge spout. It transmits the pressure away from the discharge spout. Also recommended on old trolleys. Rubber tire set 8012. Rubber tires can be fitted to an old trolley without any modifications. These wheels have larger diameters.



Weight	32 kg
Width	60 cm
Wheel	16 " (4.00x8 ") pneumatic rubber
Capacity	Approximate 75 kg wet grass

Order number	
UM 8028	Standard
UM 8029	Finecut

Tot. length (incl. handle)	128 cm
Max. Width (mm)	78 cm
Wheelbase (ext.)	62 cm
Overall height	93 - 143 cm
Height of discharge spout	15 - 65 cm
Volume	200 l
Unladen weight	70 kg





An efficient seed drill for renewing existing grassland without prior tillage.

Availability in working widths from 1.5 to 3 meter.
UM - 7926 Direct seed drill 1.5 m, 6 cm row spacing
UM - 7942 Direct seed drill 2.5 m, 6 cm row spacing
UM - 7950 Direct seed drill 3 m, 6 cm row spacing

Working width	1,5, 2,5, 3,0 m
Application	0-50 kg/ha
Seed box	(160, 270 eller 320 litres)
Row spacing	6 cm
# rows	26, 42 eller 50
# seed coulters	13, 21 eller 25
Pressure per coulter	10-100 kg
Unladen weight	400 kg (1,5 m)-800 kg (3,0 m)

What types of seeds can be sown? The machine can sow all kinds of grass seeds and most herb seeds. It is the seed size that limits its use. Ordinary grain seed is too large for the feed rollers.

Practical use in agriculture

On surface-cultivated grassland it's difficult to perform tillage. A direct seed drill is the answer. Stones just below the turf? No problem! The spring-loaded seed coulters oscillate freely and slide easily over such obstacles. The seed drill is also well suited for sowing special seed varieties in existing crops, such as clover in clover-poor meadows. And it's also well suited for sowing herbs and other vegetable varieties (organic farming.)

Golf courses, sports fields, and other green areas.

The direct seed drill has proven to be an excellent seed drill for renewing sports fields, golf courses and parks. The unique seeding units consist of "skids" with two slots with sharp adjustable coulters. This avoids ripping up loose soil, stones, and plant residues. Fairways on several golf courses have been reseeded with great success, golf was played with no disruption.

For maintenance and rejuvenating of sports fields and golf courses it may be necessary to cross-sow. For maintenance and rejuvenating of sports fields and golf courses we can deliver a special skid for the seeding units. This is based on our long experience sowing on golf courses

Unique seed coulters

Our unique seed coulters consist of "skids" with two slots with sharp adjustable coulters with adjustable ground pressure. The coulter pressure is adjustable from 10 kg and upwards by means of a spring on each coulter arm and hydraulic depth wheels (standard equipment on all machines). Each skid has two longitudinal slots. A hardened steel knife in front of each slot can be adjusted up or down to achieve desired sowing depth. The seed is dropped straight into the rows created by the sharp coulters. This system has proven to be better than both ordinary coulters and disc coulters. The seeding units consist of "skids" with two slots with sharp adjustable coulters. This avoids ripping up loose soil, stones, and plant residues. The seed drill is available in 4 working widths from 1.5 m to 3.0 m. UM7900 has 21 seeding units with a total of 42 coulters, 42 rows and a row spacing at 6 cm. Working width 2.5 m. UM7950 has 25 seeding units

with a total of 50 coulters, 50 rows and a working width of 2.5 m. Otherwise the 4 machines are exactly the same.

Seed coulters

The seed drill has a seed hopper with feed rollers. Each seed hoper has 26, 34, 42 or 50 outlets (1.5, 2.0, 2.5 or 3.0 m machine), respectively.

The seed rate is set centrally and steplessly from 0 to 50 kg / ha (5 kg / decare). (As the thousand grain mass varies quite a lot, it is recommended to calibrate the seed rate setting before starting seeding operation)

Speed - capacity

For metering system with displaceable feed roller, the amount of seed discharged depends on both how long the feed roller is pushed into the housing and on how fast the roller rotates. If the feed roller rotates too fast, the roller starts to "cheat" because it rotates so fast that the seed does not fill the grooves in the rollers completely. The seed rollers are driven via a chain by a land wheel. It is not recommended to drive faster than 6-7 km / h, which corresponds to 15 -17.5 da / h for a 2.5 m machine and 18 -21 decare / h for 3.0 m machine.



Pressure spring.
Hydraulic adjustment on depth wheels. 6 cm row distance - adjustable depth Easy filling - low height Easy adjustment / replacement of coulter blades
Farm Flex rolls.

Order number

UM 7955	Triangle Quick brackets, complete
UM 7966	Lighting equipment complete 2.5 and 3 m
UM 7968	Extra ballast weights 2.5 m (130 kg)
UM 7969	Extra ballast weights 3.0 m (150 kg)
UM 7972	Area counter (digital) for 2.5 and 3 m
UM 7974	Knife set, 3 mm steel (std) for 2.5 m machine
UM 7975	Knife set, 2 mm steel w / 1 mm shims for 2.5 m machine
UM 7976	Knife set, 3 mm steel (std) for 3 m machine

UM 7977	Knife set, 2 mm steel w / 1 m shims for 3 m machine
UM 7978	Knife set, 3 mm steel 2 m (34 knives)
UM 7979	Knife set, 2 mm steel w / shims for 2 m (34 knives)
UM 7980	Knife kit, 3 mm steel 1.5 m (26 knives)
UM 7981	Knife kit, 2 mm steel w/ shims 1.5 m (26 knives)
UM 7986	Farm Flex rolls 3.0 m
UM 7987	Farm Flex rolls 2.5 m
UM 7988	Farm Flex rolls 2.0 m
UM 7989	Farm Flex rolls 1.5 m

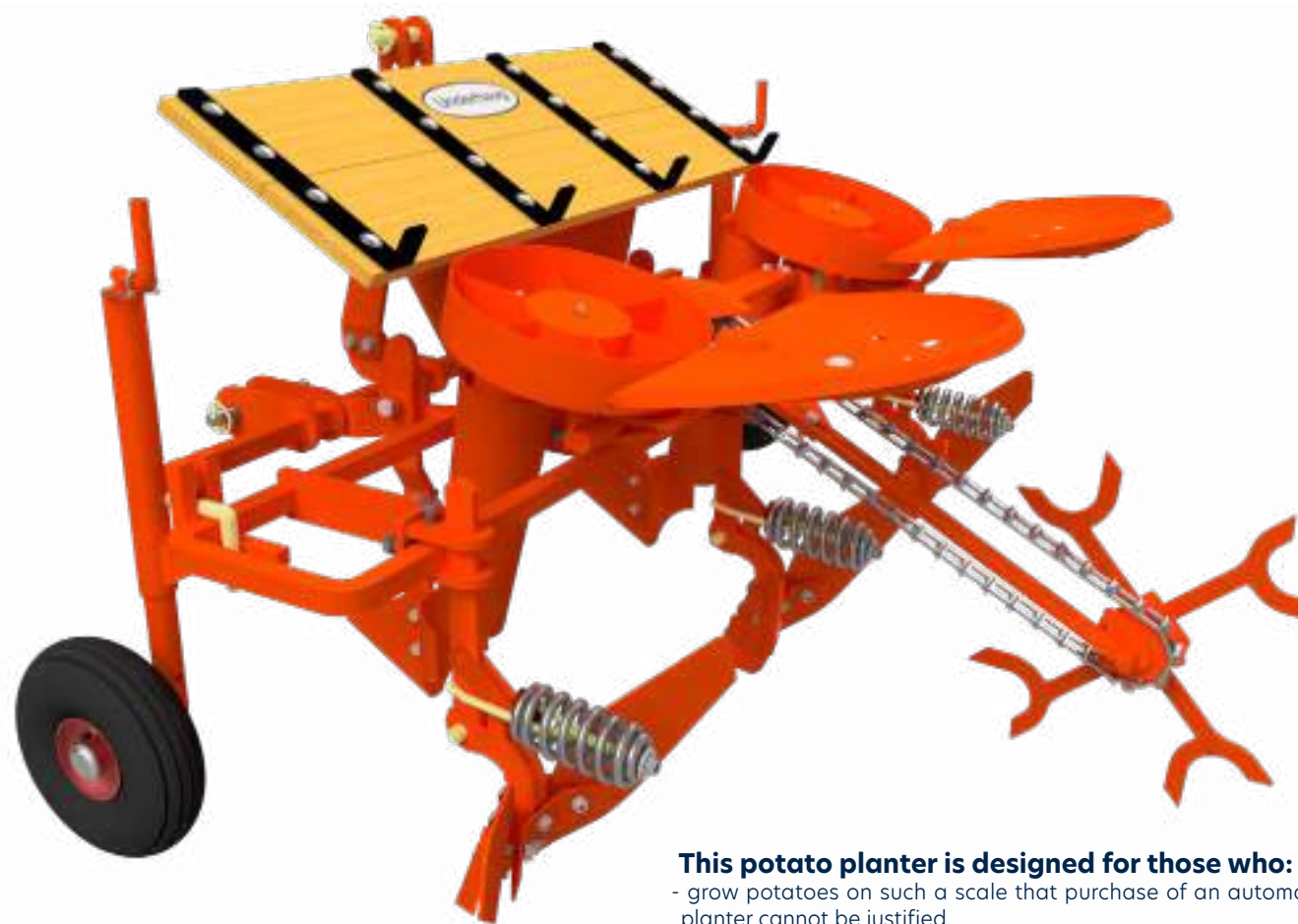
Simple and functional grass seed drill

Underhaug grass seed drill is suitable for seeding or reseeding meadows, pastures, lawns etc.

The machines are delivered as standard with three point linkage connection and adjustable rear harrow. The hopper has an effective agitator shaft for precise seeding even on hilly fields. The seed drill has tractor pattern tires. The drive is transferred via chains to the feed rollers. Feeding amount is set with a wheel with different positions and the choice of two speeds. The rear harrow is easily adjusted with pins.

Grass seed drill	UM 6025	UM 6030
Weight	165 kg	185 kg
Working width	2,5 meter	3 meter
Total width	2750 mm	3230 mm
Height	1050 mm	1050 mm
Seed box capacity	99 L	120 L
Tyre size	4.00 x 8	4.00 x 8
# Seed rollers	21	25





UM-5150 2 - ROW POTATO PLANTER

This is the semi-automatic potato planter from UM which in few minutes can be converted into a ridger. Thus - here are two quality implements in one.

Versatile

- The planter is well-suited for chitted seed.
- Capacity up to 3,3 acres (1,5 ha) a day at 70-80 cm. row width.
- Row width adjustable from 65 to 85 cm. in steps of 5 cm.
- Spacing stepless adjustable from 25 to 40 cm.
- Applicable for planting og all shapes and sizes of seed.
- Equipped with platform for boxes.

This potato planter is designed for those who:

- grow potatoes on such a scale that purchase of an automatic planter cannot be justified.
- have specialized in eraly production and use chitted seed only.
- are responsible for the potato development on test farms and in agricultural institutes.

Ridger

In standard execution the planter includes ridger with 450 mm shares. The shares are individually adjustable and they are equipped with an automatic stone release system.

The planting aggregate

For each row the is a feeding rotor. This has got 6 cells into which the potatoes are placed manually. The rotors are worked by a chain connected to a stepwheel following behind the machine. By means of this stepwheel it is possible to adjust the planting distance from 25 to 40 cm. The planting aggregate is also available as a separate unit. Ordering number UM1550 Planting Aggregate.



The best thing about Underhaug semi-automatic potato planter is that overgrown potatoes fall into the soil without any kind of harsh treatment and gives the opportunity for an earlier harvest than conventional machines.



UM-6150 ELEVATOR DIGGER

- easy to use, simple and robust construction

Simple and robust construction

UM2000 elevator digger is a robust built potato digger that can be used under nearly all har- vesting conditions. It is 3-point mounted and P.T.O. driven. The elevator chain is a hooked steel chain that can also be delivered with rubber covered rods.

Gentle handling

With correct adjustment the elevator digger will give you gentle handling of your potato crop. Important points to be considere- red for minimum damage are P.T.O. speed, forward speed and the angle of the lift elevator. Adiustment of the elevator is controlled by the length of your tractor top link.

Easy maintenance

Typical wear parts on the machine are the shares, belt sprockets, rollers and the elevator chain. All these parts are easy to replace.

Capacity

For the lifting of food potatoes and other potatoes where it is important to keep low damage, a forward speed of 2-3.5 km/h (1.25-2.2mph) is recommended. This is corresponding to 0.3-0.6 acre/hour. For factory potatoes where the damage factor is less important, the speed can be increased considerably.

Lifts ahead of pickers

At the rear of the digger, behind the elevator chain, a side grate delivers the potatoes to the side of the machine placing them far enough from the next ridge to prevent the tractor wheels rolling over them when the next ridge is lifted. With this machine it is possible to lift as much of the field as one wishes- independant of the pickers. Under wet soil conditions it is often desirable to let the potatoes rest on the ground for some while in order to dry up a little. Quicker picking is facilitated by digging in advance of the pickers.



Type:	One-row,3-point mounted evatordigger
Lifting parts:	Share, elevator chain and swinging side grate
Capacity:	0.25-1.0 acre/hour
Row width:	Max. 30" (75 cm)
Chain width:	20" (49.5 cm) rubber
Working length of chain:	180 cm
Max. wheel track:	167 cm
Min. wheel track:	121 cm
Weight:	210 kg



CROSSBOARD	GRS 452	GRS 542	GRS 612
Working width, cm	450	540	610
Weight, kg	460	515	565



Globus triple CrossKill roller

With high operational reliability and stable construction, the roller is easy to maneuver in a working position as well as during transportation. All unctions for adjustment are hydraulically operated. In transport position the side wings rest in cradles which provides good weight distribution and stability. Globus CrossKill rollers are available in 4.5 - 6.1 meters. All functions for changing from transport to working position are hydraulically operated. In transport position the side wings rest in cradles, which provides good weight distribution and stability. The parking jack ensures safe parking and a separate holder for the hydraulic hoses is standard.

The roller requires two double and one single acting rear remote control valves



Thanks to the parallel linkage on the CrossBoard the working angle is the same regardless of the working depth



Crosskill ring Ø450 mm and Ø490 mm crushes clump.



Integrated stone box on the center section. Conveniently unloading by lifting the side sections



Solid 50 cm Cambridge-rings for effective packing.

Globus triple Cambridge roller

With high operational reliability and stable construction, the roller is easy to maneuver in a working position as well as during transportation. All functions for adjustment are hydraulically operated. In transport position the side wings rest in cradles which provides good weight distribution and stability. The Globus Cambridge rollers are available in 4.5 - 7.0 meters.

The ground pressure is nearly the same over the entire working width. You benefit from an even surface, where all plants get the same growing environment.

GLOBUS CROSSKILL ROLLER	GRS 450CR	GRS 540CR	GRS 610CR
Working width, cm	450	540	610
Transport width, cm	245	245	245
Ring diameter, cm	50	50	50
Weight, kg	2020	2340	2520

GLOBUS CAMBRIDGE ROLLER	GRS 450	GRS 540	GRS 610	GRS 700
Working width, cm	450	540	610	700
Transport width, cm	245	245	245	245
Ring diameter, cm	50	50	50	50
Weight, kg	2020	2340	2520	2900



Often, simple is the best choice



Combi sow roller



Sow in black soil

The sowing drum has many advantages. You can use it to sow directly in the meadow, or in black mold. If it's a bit uneven when you go out and sow in black mold, then the brake tines comes into its own and smoothes it out before you spread the seed right behind and then with the post-harrow, which rotates the seed down a bit. The drum comes last and gets the seeds and stone packed down well. All this in one go.

Direct sowing

If you are going to sow directly in the meadow, first take the brake tines and turn the ground a little so that a little mold comes up and the harrow has something to root the seeds in. Again, you get to drum it in the same stroke so you don't

have to run over the piece a second time. When you put the machine in working position, you get the tank at a good height to fill seeds, while the fan is not above the spreading plates so that the seeds have an easy way out, and which means that there is less chance of it clogging.

The fan is electric, which means that you only need 3 hydraulic outlets on the tractor. The brake tines also has easily replaceable hardened wear steels. It comes with a screen with GPS on the speed that outputs the right amount regardless of whether you drive at 3 km/h or 9 km/h.

Delivered in good working widths of 4.5 meters and 5.4 meters at 3 km/h or 9 km/h.

BENEFITS:

- Direct/ new meadow
- Saw and drum at the same time
- Brake tines
- Advantage of sowing in well-drained soil
- 4.5 meters and 5.4 meters
- Light filling
- Easy way for seeds
- Good capacity
- Electric fan
- GPS

SIMPLE ROLLER GRS 300	
Work width, cm	300
Transportation width, cm	300
Ring diameter, cm	50
Weight, kg	1017

GLOBUS COMBI SOW ROLLER		
Work width, cm	450	540
Transportation width, cm	245	245
Ring diameter, cm	50	50
Weight, kg	3300	3740





Globus GSR stone rake

GLOBUS GSR mechanizes the task of one picking and removal.

The working depth is down to 10 cm, leaving a well-prepared field cleared of stones. Large clods are crushed, and the surface is leveled. Afterwards, the rows of stones can easily be collected by one of our stone pickers.

The tines are made of hardened boron steel with high quality and durability. The stone rakes are delivered with standard or double number of tines. Double number of tines is suitable on smaller stones.



GLOBUS STONE RAKE	GSR 32300	GSR 63300	GSR 44400	GSR 87400
Working width, cm	300	300	400	400
Standard / double, number of tines	Standard	Double	Standard	Double
Transport width, cm	345 (130*)	345 (130*)	130	130
Number of tines	32	63	44	87
Weight, kg	700	815	885	1040
Power requirement, hp	45	45	60	60

* Travelling bar as an option. PTO-shaft included on all models

Globus knows all about snow



2-stage snow blower GTF 235 and GTF 250

GT F 235 and GT F 250 is one of the best-in-class 2-stage snow blowers. Extended use of high quality Hardox and Strenx steel in the chassis, as well as Hardox 450 in the impeller, impeller housing and intake auger.

The wear blades are made of Hardox 500. Powerful driveline with duplex chain, large solid gearbox and high-quality bearings. Parts susceptible to wear have a long service life and low operating costs. The drive transmission is provided with a shear bolt torque limiter against overloads and foreign bodies.

Surface treatment!

Sandblasted - degreased and primed, before painting with 2 component varnish. The snow chute is designed to give the user full control of the direction of the snow. You can also direct the snow into the space between the tractor and the machine to avoid leaving snow in driveways. The chute can be folded down for easy maintenance and is also fitted with grease nipples for all joints to expand the chute's lifetime.



Easy access to shear pin on intake auger



Greasing points on all spout links



Solid Duplex 1" chain.



Chute rotation: New larger 50cc hydraulic motor

GLOBUS 2-STAGE SNOW	GTF 235	GTF 250
Working width	235 cm	250 cm
Impeller diameter	70 cm	80 cm
Intake auger diameter, cm	45 cm	45 cm
Weight	800 kg	900 kg
Power requirement, hp	70	80

OPTIONAL:
Wheel kit complete
Side wing, left side
Side wing, right side
Hydraulic side wing
Loading tip (picture on the right)





GSF 245-18 - The All-rounder

V-snow blower GSF 245 is the smallest of our V-models. 245 cm working width and 85 cm impeller provides high capacity and long throwing range. The rear wear skid next to the impeller house: providing excellent float and perfect adaptation to the ground.

GSF 255-18 - For the toughest tasks

V-snow blower GSF 255 is a high capacity, thoroughly tested V-type snow blower for professionals. 255 cm working width and 90 cm impeller provides very good capacity and long throwing range.



adjustable to minimize the clearance between the lades and the V-shaped intake housing.



Chute rotation: New larger 50cc hydraulic motor.



Grease Fittings on all links of the Chute deflector.



Two skid shoes at rear, next to the impeller house: providing excellent float and perfect adaptation to the ground.



GLOBUS V-TYPE SNOW BLOWER	GSF 245-18	GSF 255-18
Working width	245 cm	255 cm
Working width with 1 side wing	265 cm	275 cm
Working width with 2 side wings	285 cm	295 cm
Impeller diameter	85 cm	90 cm
Weight	920 kg	1180 kg
Power requirement, hp	fra 100 hp	fra 130 hp

OPTIONAL:
Wheel kit complete
Side wing, left side
Side wing, right side
Tool Box

GTF 255-18 & GTF 275-18

MADE HERE

MADE HERE



GTF 255-18 and GTF 275-18

The number one snow blower for huge amounts of snow!

GTF 255 and GTF 275 is one of the best-in-class 2-stage snow blowers. Extended use of high quality Hardox and Strenx steel in the chassis, as well as Hardox 450 in the impeller, impeller housing and intake auger.

Reversible Hardox 500 scraper blade. Parts susceptible to wear have a long service life and low operating costs. Large intake auger and 85 cm impeller- exceptional work output! The snow blower is equipped with a large center-mounted gearbox fitted with automatic overload protection on each side towards the intake augers.

Can be pulled or pushed as standard. Option: Heavy duty gearbox for front- and rear mounting, 1000 rpm. Optional kit for front mounting. Fast and easy changing between rear pull and rear push mode.

The snow chute is designed to give the user full control of the direction of the snow. You can also direct the snow into the space between the tractor and the machine to avoid leaving snow in driveways. The chute can be folded down for easy maintenance and is also fitted with grease nipples for all joints to expand the chute's lifetime.



Can be pulled or pushed as standard. By using a gearbox- kit it can also be mounted in front of the tractor



Large solid gearbox and automatic overload device on intake auger.



Chute rotation: New larger 50cc hydraulic motor

GLOBUS TWO-STAGE BLOWERS	GTF 255-18	GTF 275-18	OPTIONAL: Wheel kit complete Side wing, left/right Hydraulic side wing Side knife, left/right
Working width	255 cm	275 cm	
Working width without side wings	235 cm	255 cm	
Working width with 1 side wing	275 cm	295 cm	
Working width with 2 side wings	295 cm	315 cm	
Impeller diameter	85 cm	85 cm	
Intake auger diameter, cm	85 cm	85 cm	
Weight	1200 kg	1400 kg	
Power requirement, hp	130 hp	130 hp	



Globus self-loading spreading bucket, delivered in galvanized steel

Supplied with 3-point linkage or SMS brackets (Trima/Ålør/HMV)

Simple and reliable construction for spreading salt and sand. Supplied with individual blade springs in Hardox which are placed on the back towards the carrying machine and therefore minimize the risk of bent springs when filling. Large stirrer at the bottom of the box minimizes the risk of clumping and packing in the box.

The output roller is equipped with Hardox knobs. The output quantity is easily adjusted by adjusting the rubber flap towards the outlet with an adjustment spring on the side of the box. The spreading bucket can also be supplied with hydraulic output regulation (Optional equipment)

Tarpaulin protection kit and support legs can also be supplied as optional extras. Sizes from 900-1600 litres.

GLOBUS SELF-LOADING SPREADING BUCKET

Working width	240 cm
Transport width	265 cm
Weight	600 kg

Order number:	
G-GSK1600-23	Globus 1600L spreading bucket w/3-point linkage
G-GSK1601-23	Globus 1600L spreading bucket w/SMS brackets

Optional:	
G-130163	Flow regulation valve
G-500540	Tarpaulin
G-500537	Support legs set



Excavator buckets

MADE HERE

GLOBUS

DIGGING BUCKETS, NARROW BUCKETS, CLEAN-UP BUCKETS, FIXED



Excavator buckets



Produced in sizes from 28 liters to 400 liters. Width from 360 mm to 800 mm. Can be delivered for most types of Quick Couplers or directly attached to the machine. Teeth or blade as desired. All Excavator buckets are made of high-quality steel, designed to last a long time and withstand a tough working environment. Buckets can be delivered for most types of Quick Couplers or directly attached to the machine. All buckets listed below are equipped with the Kvernex reversible tooth system. If you prefer another system, most models can be delivered with teeth from well-known suppliers such as Cat, Volvo, MTG , Kingmet etc. As an option for buckets with the Kvernex front we also deliver Cutting edge for all models.

- Model
- GVG 28-S30 FF
 - GVG 28-S30 M16 K VX
 - GVG 60-S30 FF
 - GVG 60-S30 M16 K VX
 - GVG 90-S30 FF
 - GVG 90-S30 M16 K VX
 - GVG 120-S40 FF
 - GVG 120-S40 M20 K VX
 - GVG 160-S40 FF
 - GVG 160-S40 M20 K VX
 - GVG 180-S40 FF
 - GVG 180-S40 M20 K VX
 - GVG 250-S40 FF
 - GVG 250-S40 M27 K VX
 - GVG 250-S50 FF
 - GVG 280-S40 FF
 - GVG 280-S40 M27 K VX
 - GVG 400-S50 FF
 - GVG 400-S50 M27 K VX
 - GVG 280-S40 M27 K VX
 - GVG 400-S50 FF
 - GVG 400-S50 M27 K VX



Excavator Narrow Trenching Buckets



Availability in sizes from 20 liters to 200 liters. Width from 160 mm to 500 mm. Teeth or blade as desired. Our buckets come as standard with S Quick-Coupler.

- Model
- GVS 28-S30
 - GVS 28-S30
 - GVS 65-S40
 - GVS 65-S40
 - GVS 110-S40
 - GVS 110-S40
 - GVS 160-S50
 - GVS 160-S50
 - GVS 300-S60
 - GVS 300-S60



Excavator Clean-Up buckets - fixed



Availability in sizes from 50 liters to 465 liters. Width from 700 mm to 1400 mm. Hydraulically tiltable with fixed coupling for tiltrotator or tilt. Our buckets come as standard with S Quick Coupler.

- Model
- GPF 50-S30
 - GPF 105-S30
 - GPF 135-S30
 - GPF 135-S40
 - GPF 175-S40
 - GPF 250-S40
 - GPF 250-S40K
 - GPF 300-S40
 - GPF 300-S40K
 - GPF 330-S40
 - GPF 330-S40K
 - GPF 360-S40
 - GPF 360-S40K
 - GPF 360-S50
 - GPF 360-S50K
 - GPF 465-S50

CLEAN-UP BUCKETS, - HYDRAULIC TILT, RIDDLE
 BUCKETS, SORTING BUCKETS, TRAPEZOID BUCKETS



Clean-Up buckets - hydraulic tilt

Availability in sizes from 50 liters to 360 liters.
 Width from 700 mm to 1300 mm.
 Hydraulically tilttable with fixed coupling for
 tiltrotator or tilt. Comes as standard with S
 Quick Coupler.



Model
 GPH 50-S30
 GPH 105-S30
 GPH 135-S30
 GPH 105-S40
 GPH 135-S40
 GPH 175-S40
 GPH 250-S40
 GPH 300 S40
 GPH 330-S40
 GPH 360-S40
 GPH 360-S50

MADE HERE

MADE HERE

RIPPER, CUTTING EDGE



Excavator Riddle Buckets

Availability in sizes from 150 liters to 416 liters.
 Width from 700 mm to 850 mm. Teeth or blade
 as desired. Our buckets comes as standard
 with S Quick Coupler.



Model
 GVF 170-S30
 GVF 170-S40
 GVF 260-S40
 GVF 260-S40
 GVF 416-S50

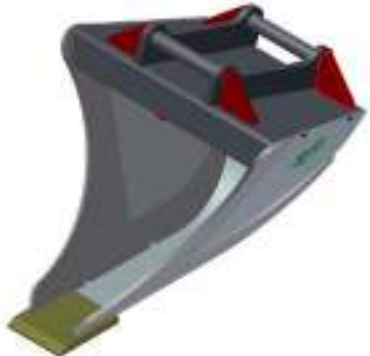


Excavator Sieving Buckets

Volume 220L and 400L. Only fixed front blade
 with similar shape as a Clean-Up Bucket.
 Our buckets come as standard with S Quick
 Coupler.



Model
 GVF 170-S40ST
 GVF 275-S40
 GVF 400-S50



Trench Buckets (V-shape)

Availability in sizes from 28 liters to 300 liters.
 Teeth or blade as desired. Our buckets come
 as standard with S Quick Coupler.



Model
 GVB 28-S30
 GVB 45-S30FF
 GVB 70-S40
 GVB 200-S50
 GVB 300-S60

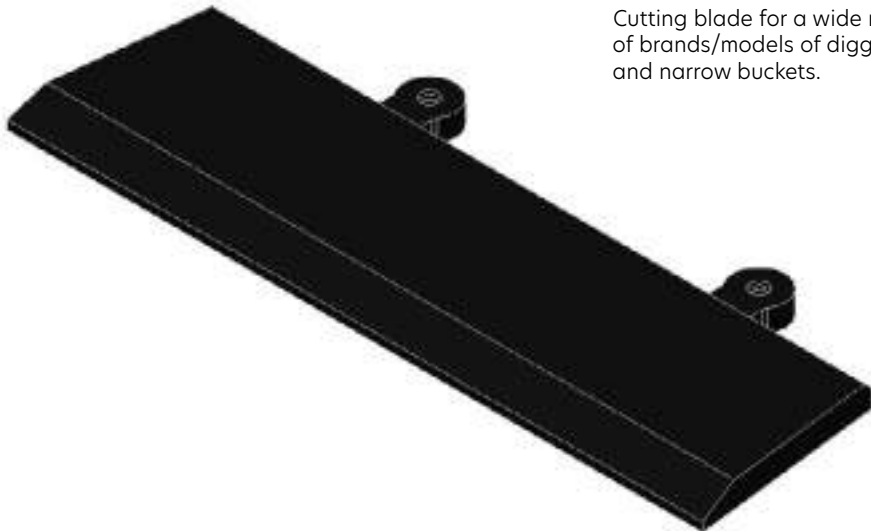


Ripper

For Excavators 2 tons to 24 (35) tons.
 Replaceable teeth
 Comes as standard with S quick coupler.



Model
 GVT 2 - 4 S30 M20
 GVT 2 - 6 S30 M20
 GVT 4 - 5 S40 M20
 GVT 4 - 6 S40 M20
 GVT 4 - 6 S40 M27
 GVT 4 - 6 S50 M27
 GVT 6 - 10 S50 M27
 GVT 9 - 15 S60 M36
 GVJG 2 - 6 S30 M20



Cutting edge system

Cutting blade for a wide range
 of brands/models of digging buckets
 and narrow buckets.



Model
 GVI 20 M20
 GVI 25 M16
 GVI 33 M16
 GVI 33 M20
 GVI 33 M27
 GVI 40 M16
 GVI 40 M20
 GVI 40 M27
 GVI 40 M36
 GVI 46 M16
 GVI 50 M16
 GVI 50 M20
 GVI 50 M27
 GVI 50 M36
 GVI 60 M16
 GVI 60 M20
 GVI 60 M27
 GVI 60 M36
 GVI 60 M48
 GVI 70 M20
 GVI 70 M27
 GVI 70 J250
 GVI 80 M20
 GVI 80 M27
 GVI 80 M36
 GVI 85 M27
 GVI 90 M36
 GVI 100 M36
 GVI 101 M36



UNDERHAUG

With strength and experience from generations

Feed the planet. Thats what agricultur is all about. Underhaug ´s job is to pprovide farmers all over the world with equipment that helps them do their job on the best possible way. Underhaug produces and exports a wide specter og first class agricultural equipment that has an excellent quality and last for generations. Check out all our products at our website - you will find a lot of good reasons to reach out to us. We look forward to tell you more!

Our location

Torlandsvegen 3, 4365 Nærbo
Norway

Contact us

Tlf.: 51 43 49 78
post@underhaug.no



Follow us in social media: **Underhaug**

Find your nearest dealer at our website: **underhaug.no**

